

## pray informed

- Sign up via email to receive our quarterly **NEWSLETTER & PRAYER UPDATE**.
- “Like” our **FACEBOOK PAGE**, New Mornings Reentry Services, to see regular prison ministry updates on your feed.

## get involved!

- Join our Women’s Prison Team. We rely on female volunteers to help teach/lead our **WOMEN’S FRESH START COURSE** on Tuesdays 1-2:30pm and our **WOMEN’S DISCOVERY GROUP** on Thursdays 7-8pm at Chester County Correctional Center. (Contact Michelle Manthey for more information.)
- Become a mentor to a man or woman in Chester County Prison who is returning to your community. Attend a **RETURNING HEARTS’ PRISON & REENTRY MENTOR TRAINING** to get started. (Contact Michelle Manthey for more information.)
- Donate **GRACE BAGS** or items needed for them to those starting over in our community (see our website for details).

## give

As a faith-based ministry, we rely on financial partners, as do our missionaries. Donate securely via:

- **PAYPAL ON OUR WEBSITE**—be sure to designate your gift to New Mornings, a missionary, or a specific need under “Write a note.”
- **ELECTRONIC FUNDS TRANSFER**—email us to request the form and more information.
- **PERSONAL CHECK**—make payable & mail to: **LTM, PO Box 29, Coatesville, PA 19320**. Designate your gift to “New Mornings” or to a specific need in the memo line. If for a missionary, write their name on a separate piece of paper.

## contact us

**NEW MORNINGS REENTRY SERVICES**  
PO Box 29  
643-645 East Lincoln Highway  
Coatesville, PA 19320

### QuietRevolution.org

inbox@quietrevolution.org

610.384.5393 (tel) | ext. 3  
610.384.5393 (fax)

**Heather Albrecht**, *Reentry Facilitator*  
halbrecht@quietrevolution.org | ext. 312

**Michelle Manthey**, *Prison Ministry Coordinator*  
mmanthey@quietrevolution.org | ext. 310

**Bill Shaw**, *LTM Executive Director*  
bshaw@quietrevolution.org | ext. 103



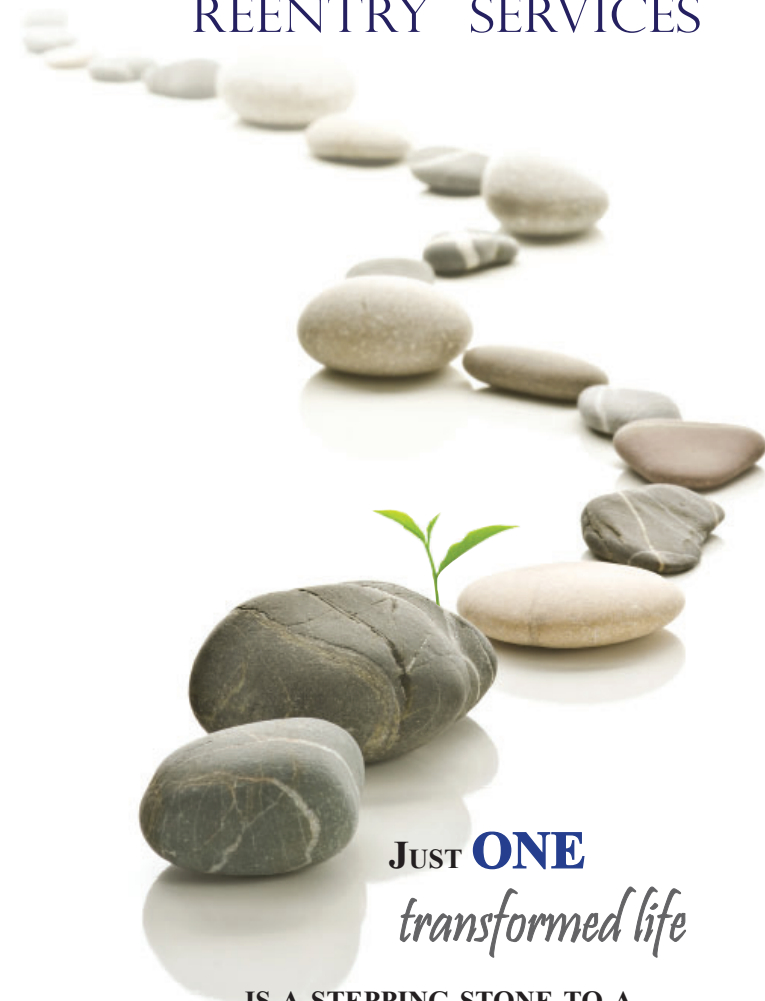
**New Mornings**  
**is a partnership of**  
**LIFE TRANSFORMING**  
**MINISTRIES**

**based in Coatesville, PA.**

*Church Unity. Partnership. Transformation.*

# New Mornings

REENTRY SERVICES



JUST **ONE**  
*transformed life*

IS A STEPPING STONE TO A  
*transformed community.*



The *mission* of New Mornings Reentry Services is to break the cycle of incarceration in our community through the transforming love of Jesus Christ. We provide information, practical services, and mentoring to incarcerated and previously incarcerated people, offering hope and help where possible. We also connect members of the Body of Christ with our clients to better meet individual needs and to edify our community as a whole.

### *prison bible study*

Just as in our church body, many incarcerated come from abusive, addictive and/or dysfunctional family backgrounds. Others have experienced traumatic, life-altering events or simply made poor choices. And just like us, they have learned to suppress their pain in unhealthy ways. Prison is an adult “time out.” It takes away the constant noise of the world, allowing its residents to see the consequences of their poor choices and reflect on what and WHO really matters.

New Mornings is privileged to minister inside Chester County Correctional Center. A team of staff and volunteers lead our weekly **WOMEN’S DISCOVERY GROUP** on Thursday nights, which focuses on God’s Word in a small group environment. We foster caring relationships with those who attend through **ONE-ON-ONE MENTORSHIP** and seek to continue those relationships when they return home—where they must learn to balance the noise of the world with their new found clarity in Christ.

### *life skills course*

In addition to our Women’s Discovery Group, a separate team under New Mornings offers **FRESH START**, an 8-week course offered Tuesday afternoons at Chester County Correctional Center (the work release building). Through practical guidance, prayer, and foundational faith-based principles demonstrated in Scripture, this course teaches those who are incarcerated to think differently. It also prepares them to make positive choices when they return to their families and communities.

### *encouragement in writing*

Prison takes its residents back to a time before text messaging, where personal mail is **TREASURED**. Knowing this, Scripture-based **CARDS OF ENCOURAGEMENT** are an integral part of our ministry. We send them weekly those who attend any of our groups. We also send them to inmates incarcerated in other prisons when requested. For some, this is the only mail they receive.

### *grace in times of need*

Through the generosity of local churches, we offer **MEN’S & WOMEN’S GRACE BAGS** to our clients when they are released from prison or come to our office for assistance. These reusable bags include toiletry items, a devotional and a few clothing or luxury items to demonstrate God’s grace and provision while starting fresh.

### *angel tree*

At Christmas, we partner with local churches and the Chaplain’s office to provide gifts to the children of women at the Chester County Prison through our version of **ANGEL TREE**. We encourage personal interaction between sponsors and our Angel Tree families, and make sure that each family receives a Bible for their child(ren), in addition to gifts.

### *mentor training*

68% of ex-offenders return to prison within just 3-4 years. The barriers they face are overwhelming. Having a mentor to serve as a friend, accountability partner, guide and cheerleader can be key to a successful reentry. Recognizing this, we’ve partnered with ReTURNing Hearts under the Chaplain’s office to develop and offer **PRISON & REENTRY MENTOR TRAINING** to all religious volunteers at Chester County Prison as a first step toward addressing this need.

We are also actively researching and preparing for additional trainings on needed areas, such as, the effects of trauma, maintaining healthy boundaries and addiction, to better equip our volunteers.